

# LEXINGTON, KY'S THREE LANGUAGES of ENERGY MANAGEMENT

## FACTS:

- Lexington-Fayette County has a population of **323,780**
- First merged city-county government in Kentucky

- Known as the horse capitol of the world
- 95% of the world's Bourbon is aged in KY, with 9 distilleries within 35 minutes of Lexington

## THE COUNTY has been using *EnergyCAP* — SINCE 2010. —

Until then, there was no centralized energy management system or process.

### Commodity Accounts Tracked:

**883**  
electric

**226**  
water

**90**  
natural gas

The county's EnergyCAP database is structured to meet the needs of the **three departments** that use it most:

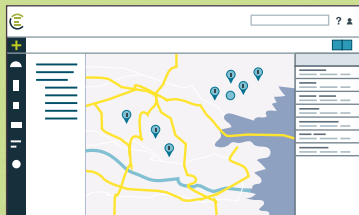
#### 1 ACCOUNTING

EnergyCAP's tree view is set up to replicate invoice numbers.

Accounts	
Root Node	
▼ KU Meter Data	
> 3000-0000-5391 / not billed	
▼ 3000-0000-5540 / Refuse	
4224 Hedger Ln Maint	
1631 Old Frankfort PK Div	

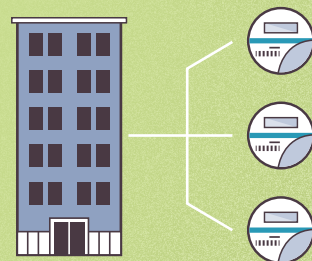
#### 2 FACILITIES

Consumption and commodities can easily be associated with a physical property.



#### 3 BUDGETING

The Chargeback feature allocates utility costs to specific budgets.



## BENEFITS

### EASE OF USE

Data in EnergyCAP is easy to access and actionable.

#### INFORMATION

AT YOUR  
FINGERTIPS



### ANALYZING METER LEVEL DATA

uncovered account ownership issues, incorrect budget allocations, and less-than-ideal rate schedules.



### ADDITIONAL WORKLOAD

Lexington's Energy Section became the go-to source for energy-and utilities-related projects, justifying the value of an additional project manager.



### TRANSPARENCY

Anyone can view data and draw conclusions.



### RATE REVIEWS

• YEILDED •

**\$1,045,000**

IN ELECTRIC ACCOUNT SAVINGS

### BUNDLING NATURAL GAS

• accounts •

FOR VOLUMETRIC PRICING SAVED

**\$230,000**

IN THE FIRST YEAR