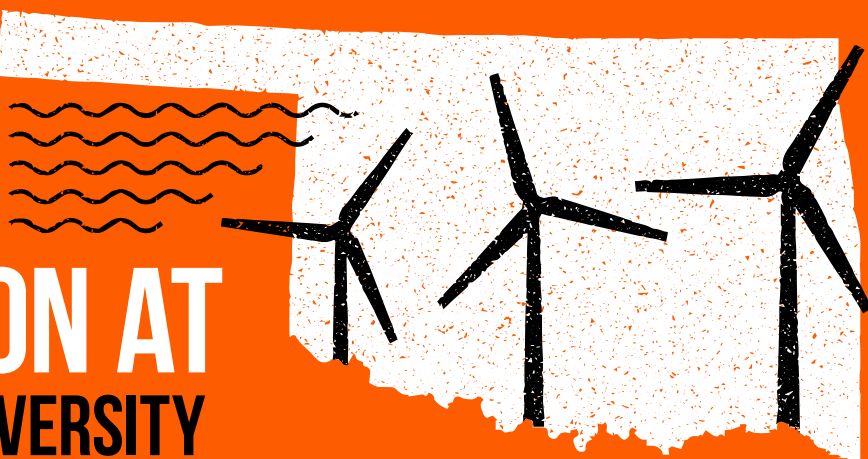
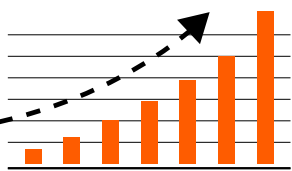
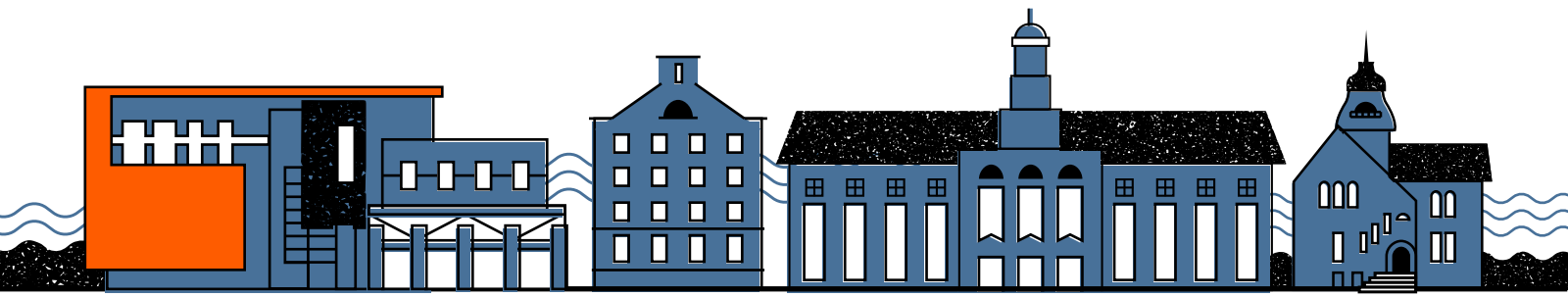


CREATING A CULTURE OF CONSERVATION AT OKLAHOMA STATE UNIVERSITY



OSU has more than **300 FACILITIES** across **5 CAMPUSES.**

Approximately **1,800 VENDOR & SCHOOL-OWNED METERS** account for an annual utility expenditure of **MORE THAN \$87 MILLION.**



AS THE UNIVERSITY GREW, so did its energy consumption & annual utility budget.

IN 2007

leadership saw the advantages of conserving energy and established a behavior-based, campus-wide conservation program.



THE PROGRAM'S MISSION STATEMENT:

To promote university-wide stewardship of resources by reducing energy consumption, while maintaining a productive educational environment

8 ENERGY MANAGERS

in total were hired to implement the new energy policy.



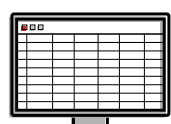
They defined expectations and performed frequent energy audits to evaluate the impact of behavior changes and identify additional savings opportunities.

OSU ALSO IMPLEMENTED ENERGYCAP®

Prior to EnergyCAP...



...approx. 1,000 submeter readings were handwritten in logbooks



...then manually entered into an Excel spreadsheet



...then re-keyed into a DOS-based application.

After EnergyCAP...



...meter data was recorded in the field and uploaded immediately



...reducing errors and saving hours of manual labor



...and quickly identifying any potential energy-related issues.

The impact of OSU's energy conservation-focused culture was felt quickly.

Documented cost avoidance for the period of **FY 2007-2012** was approximately **\$20 MILLION.**

Multiple individual facilities verified cost avoidance in excess of **\$1 MILLION** in 2013.

Student housing facilities earned **ENERGY STAR AWARDS** for their **top 25% energy efficiency rankings.**

A UNIVERSITY-OWNED WINDFARM

was also put into operation, producing at least **67% OF THE ELECTRICITY** consumed by OSU-Stillwater and greatly reducing the campus' carbon footprint.



Over the program's first 12 years, EnergyCAP has documented a cost avoidance of over **\$66.7 MILLION.**

The cost avoidance **goal is 20%**, and as of Sept. 2019, four of OSU's five campuses have exceeded the goal.

	Cost Avoidance	Cost Avoidance %
OSU Stillwater	\$53,144,928	17.3%
OSU Inst. of Technology	\$3,691,423	27.2%
OSU Oklahoma	\$3,592,938	29.7%
OSU Tulsa	\$3,185,316	21.7%
OSU Center for Health Sciences	\$3,103,120	26.8%
Total Savings to-Date	\$66,717,725	18.6%